

PRINTER AUTOMATION

Silent PDF Printer



Copyright by Carl Valentin GmbH / 1225

Particulars on delivery, appearance, capacity, dimensions, and weight reflect our knowledge gained at the time of printing.

Subject to modifications.

All rights reserved including those of the translation.

No part of the work may in whatever form (print, photocopy, or another process) may be reproduced without the written permission of Carl Valentin GmbH or edited, duplicated, or disseminated from the use of electronic systems.

Constant development of the devices may be responsible for discrepancies arising between the documentation and the device.

The current version is available under www.carl-valentin.de

Trademarks

All the specified brands and trademarks represent registered brands or trademarks of their owners. They may not be specifically identified. It cannot be concluded from a lack of identification that it does not involve a registered trademark.



Carl Valentin GmbH

Neckarstraße 78 – 86 u. 94
78056 Villingen-Schwenningen

Phone +49 7720 9712-0
E-Mail info@carl-valentin.de
Internet www.carl-valentin.de

Table of Contents

1	Print PDF files automatically	5
1.1	Basic procedure	5
2	Installation	6
3	Configuration	8
3.1	File formats	9
3.2	Status display	10
4	Automatic start as a service	11
5	Other settings	12
6	System requirements	13
6.1	Used ports	13
7	Response times	13
8	Maximum number of printers	13
9	Note	13

1 Print PDF files automatically

With **Silent PDF Printer**, PDF files can be sent to the printer using directory monitoring.

A third-party program creates a PDF file in label format and saves it in a monitored directory.

SPP recognizes this file and sends it as a print job to a defined printer. The conversion to print data is handled by the installed printer driver.

SPP consists of two components: status program and service.

Configuration is carried out in the status program.

1.1 Basic procedure

SPP is launched as a standalone service on the PC and allows you to connect as many printers as you want. Each connection to a printer runs in an independent thread, ensuring parallel processing.

As soon as the SPP service is started, it checks the configured printers for available label sizes so that the appropriate size can be transmitted to the driver later.

The text “Silent PDF Print” is displayed on the printer display for information purposes.



PDF files are analyzed using standard .NET classes, converted into bitmap data, and sent to the printer driver. This means that the driver can be used to adapt the printout to the respective printer.

i NOTE!

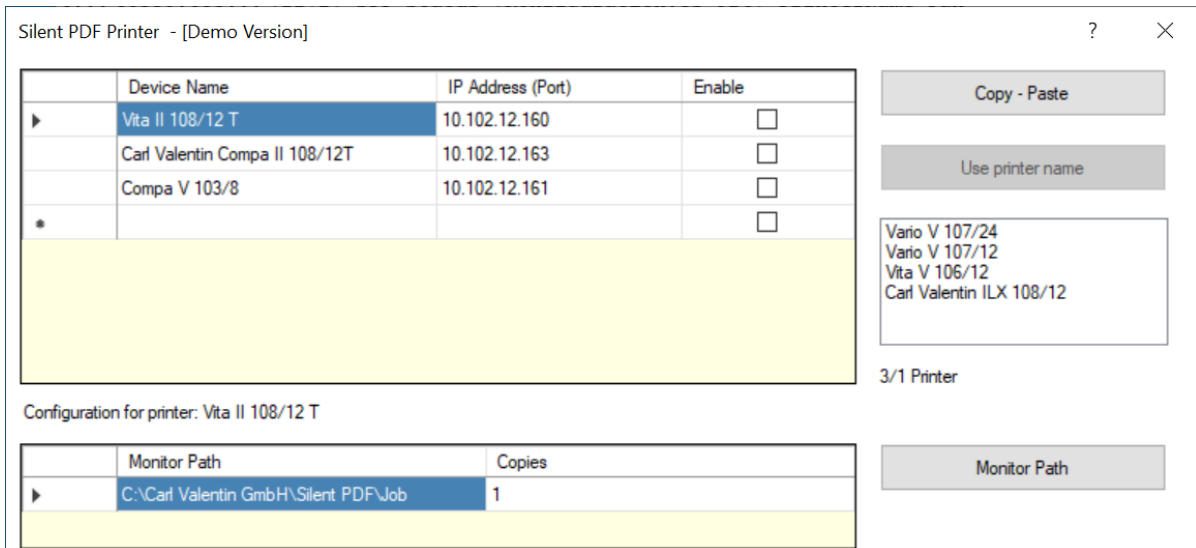
The more printers that need to be controlled, the lower the print frequency must be. If in doubt, check the CPU usage in Task Manager.

2 Installation

The program consists of two parts:

- the service
- the status display, including configuration.

After the program has been installed, the configuration dialog opens automatically.

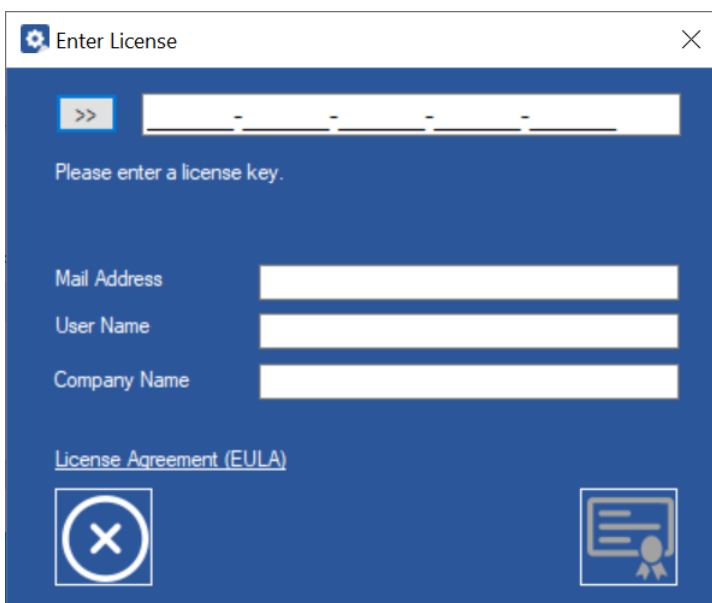


Three printers are provided as examples in the default settings. Although the first printer is active, it would be a coincidence if the address were used.

The printers must be set up and activated in the configuration.

The file paths must also be adapted to your own environment.

Because there is no valid license at this point, the next step is to request one.



The service will then be restarted so that the new configuration and license key can be activated.

Desktop Icons

If the taskbar icon is not present, the program can be started using the icon on the desktop.

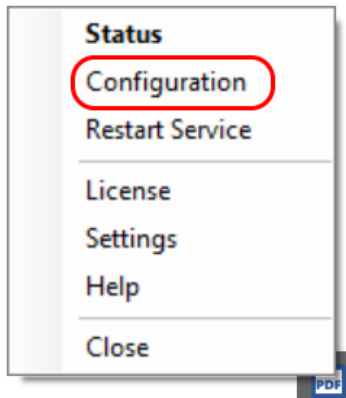


This will also display this icon in the taskbar (bottom right). Right-click on this icon to activate the status display.



3 Configuration

The configuration can be opened via the context menu.



A separate monitored path must be created for each printer.

Silent PDF Printer - [Demo Version] ? X

	Device Name	IP Address (Port)	Enable
▶	Vita II 108/12 T	10.102.12.160	<input checked="" type="checkbox"/>
	Carl Valentin Compa II 108/12T	10.102.12.163	<input type="checkbox"/>
	Compa V 103/8	10.102.12.161	<input type="checkbox"/>
*			<input type="checkbox"/>

Copy - Paste

Use printer name

Vario V 107/24
Vario V 107/12
Vita V 106/12
Carl Valentin ILX 108/12

3/1 Printer

Monitor Path

Configuration for printer: Vita II 108/12 T

	Monitor Path	Copies
▶	C:\Carl Valentin GmbH\Silent PDF\Job	1

Printer icons: Print, Home, Copy, Close

The number of licensed printers is shown in the display, e.g., 3/5 printers.

Define additional printers

By selecting a printer line, you can create a copy using the *Copy – Paste* button and then edit it..

It is important to pay attention to the IP address used or to deactivate duplicate entries if necessary.

Enable settings

The settings can be activated using the first switch. The service will restart automatically.



The two middle switches can be used to export or import settings.

3.1 File formats

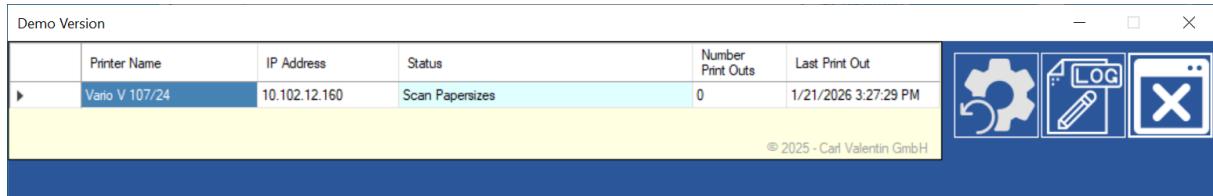
For the PDF files to print correctly, the formats used (e.g., 100 x 60 mm) must be recognized by the printer drivers.

Unknown sizes must be created in the printer server properties before the service is started.

3.2 Status display

All defined printers are displayed in the status display.

The status of each printer is displayed in different colors, so you can immediately see which printers are currently in use and whether any errors have occurred.



Demo Version

Printer Name	IP Address	Status	Number Print Outs	Last Print Out
Vario V 107/24	10.102.12.160	Scan Papersizes	0	1/21/2026 3:27:29 PM

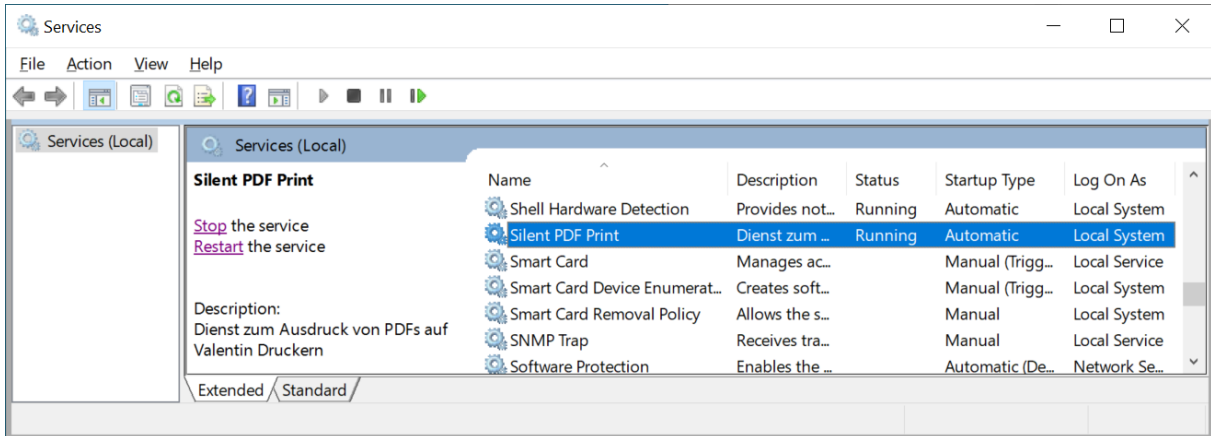
© 2025 - Carl Valentin GmbH

The number of printouts can be set to 0 using the switch with the gear icon.

Simple logging can be activated using the middle switch. Log files are saved in the directory C:\logfile, unless otherwise specified.

4 Automatic start as a service

The service is normally started even without logging in to the system.



If the service should ever hang, it can be restarted in the Services dialog or via the context menu.

5 Other settings

These can be opened via the context menu and the *Settings* command.

The respective file for directory monitoring is temporarily stored until all information is available. This file is then copied to the monitored directory, where it is further processed by the directory monitoring system and deleted.

This auxiliary directory can be defined in the following dialog. If no specification is made, c:\logfiles is used.

Log and debug files are also stored in this directory.

Delay: A saving program must release the PDF file. The delay can be used to adjust the interval between recognition and access to the file.

Service restart: It is recommended to restart the service regularly so that blocked resources can be released. After, for example, 10,000 print jobs, wait for approximately one minute during which there has been no activity. The service will then restart.

6 System requirements

- Windows 10 or Windows Server 2016 or newer
- .NET Framework 4.8
- Printer: at least SH3 series with Ethernet connection

6.1 Used ports

The service uses port 7410.

Ports 9100 and 9099 are used for the printer.

7 Response times

The threads that are started run in parallel and are therefore dependent on the system. This means that the program cannot guarantee that responses to received data will occur in real time.

Connections to newly switched on printers are made with a timeout of approximately three seconds and a response time of one second for other processes.

When the service starts, all possible form sizes are loaded first. This may take several seconds.

The status display is updated at intervals of approximately 500 milliseconds.

Printing a PDF file may take at least 3 seconds, depending on its size.

8 Maximum number of printers

The maximum number depends on the license. With a license > 10, 15 printers is realistic. In this case, attention must be paid to CPU utilization and PC performance. Although more than 15 printers are theoretically possible, this is not recommended.

9 Note

Since every system can behave differently, it cannot be guaranteed that software will behave identically on every system.

Subject to changes.

Illustrations or descriptions in this document may differ slightly in more recent software versions.

Further information can be found in the help file.



Carl Valentin GmbH
Neckarstraße 78 – 86 u. 94
78056 Villingen-Schwenningen
Phone +49 7720 9712-0
info@carl-valentin.de
www.carl-valentin.de

